



TRENDS & THEMES FROM iSALONE

2022

THE
Kitchen & Bathroom
BLOG



SALONE DEL MOBILE.MILANO 2022

How amazing it was to be back in Milan after a four-year break! It did feel quite surreal walking through the entry gates on the first day and my feet remembered why I need to wear comfortable shoes! Attendee numbers were lower this year than in previous years, but that can be partially attributed to the lack of Russian and Chinese contingent who usually attend — both as exhibitors and as attendees. There were also a few key exhibitors missing from the halls, but that may have been because of the date change to June that conflicted with other events.

This year was the first year since the pandemic that the show had been held in full, so it was with great excitement that the world descended on Milan to celebrate all the wonderful things that Milan Design Week brings, from the displays in the exhibition halls to the incredible events and installations in Milan's famed Design Districts.

When it came to what was on display, the designs that caught my attention were the ones that played into our sense of familiarity and made clever use of technology to enhance the feeling of the home as a sanctuary.

This poses a very interesting question for 2024 — will we be in a global position of more certainty and will the manufacturers be in a position to push the boundaries when it comes to design? Or, will the effects of the global pandemic become more ingrained and will we see more of the same when the show returns? Only time will tell.

MELANIE.

CONTENTS

| | |
|-----------------------------------|----|
| <i>Facts & Figures</i> | 4 |
| <i>Kitchens</i> | 5 |
| <i>Bathrooms</i> | 12 |
| <i>Storage & Organisation</i> | 20 |
| <i>Lighting</i> | 21 |
| <i>Appliances</i> | 23 |
| <i>Tapware</i> | 26 |
| <i>Resources</i> | 28 |





262,608 ATTENDEES
 FROM 173 COUNTRIES
 2175 EXHIBITORS
 600 YOUNG DESIGNERS
 3500 ACCREDITED JOURNALISTS

EUROCUCINA

FTK (TECHNOLOGY FOR THE KITCHEN)

SALONEBAGNO

SALONESATELLITE

S.PROJECT

WORKPLACE 3.0

SALONE INTERNAZIONALE DEL MOBILE



KITCHENS

The overwhelming theme this year was “calm” and “safe”. Every major European design house was focused on creating nurturing kitchen spaces into which we could retreat from the chaos of the outside world. Quite possibly as an antidote to the past two years of pandemics, lockdowns, restrictions, missing family and friends, and the associated trauma of the event no one saw coming, all the kitchens this year were dressed in neutrals and understated shades. There were very few bright tones or gloss surfaces, with all designers choosing predominantly matte finishes, natural tones and reserved colour palettes. The emphasis was on finding value in spending time at home and investing in family time and family space. The kitchen was presented as a space of nourishment and nurture.



**CALM, SAFE,
NOURISH, SUPPORT,
FAMILY, LIFESTYLE,
PRIVATE, COMFORT,
ENRICH, LOVE,
HOME, RELAX**

CESAR UNIT POCKET →

Designed by Gagia Cumini, this is a single compact station that combines storage, washing, cooking and preservation of food. Two versions are available. One is designed to be installed against the wall and the other is double-sided with a large opening that serves as a window. In the two-sided version, one side can service the kitchen, the other side can be for living room.



ARRITAL AK_O4

Designed by Franco Driusso, this version incorporates a new larger setting with an expanded range of tactile and colour finishes. The extended table acts as a "bridge" to provide an off-set balance and a functional element within the design.

SCAVOLINI LUMINA →

Designed by Vuesse, Lumina is clean cut and textural with new 75cm base units that create an innovative visual aesthetic. Two textures are available (round and linear) to add character and style to the kitchen, as well as provide a harmonious balance of dimension, shape and materials.





← ERNESTOMEDA SIGN

Designed by Giuseppe Bavuso, this open-space concept uses no enclosed cupboards in the upper section but, instead, includes glass-fronted cabinets and boiserie panels for visual balance. A Move On Plus® snack table with sliding top is an interesting storage solution that makes the most of available space.



DOIMO CUCINE ALL-AROUND ↓

Described as “a room without walls”, the tall units at the rear of this kitchen become the central grounding element. Pocket doors conceal appliances and work spaces to provide a streamlined visual finish. The pantry at the rear is the workhorse, designed to house the functional elements and keep the main kitchen clutter-free.



← TM ITALIA AVIGNON®

Designed in partnership with Nicola Gallizia, this kitchen highlights the concept of space division and combined systems. It features an island plus integrated table, together with the large full-height cabinet wall to break up space and function. The island also features two hidden units — one with a monitor that rotates to face the table or the kitchen, the other next to the hob for storage of spices and utensils.



← **NOLTE NEO**

Modern country functionality, Neo is an interpretation of the modern country style but with a rich, deep smooth finish. It offers easy transition to the living room and can include other elements such as a work station for a home office. Available in 19 matt lacquer finishes.



↑ **SCANDOLA MOBILI ECLETTICVA**

Designed by Marco Bortolin, this kitchen is a result of the company's focus on environmental sustainability. The goal was to innovate yet stay grounded in company's values which centre around care and respect for the environment. Tradition and technology join forces with the beautiful fluted panels, creating a play on light and shadow.



← **NOBILIA EASYTOUCH**

This design showcases Nobilia's Easytouch ultra-matt lacquered laminate range in two new soft, minimalist colours for subtle beauty and natural clarity within the home. This kitchen features the new shade of Mineral green (the other is Fjord blue).



VENETA CUCINE ↴

With a focus on maximum customisation, rethinking space and new materials, Veneta Cucine looks at how its designs highlight volumes and extend storage space, while always paying attention to multi-functionality and how the kitchen interacts with adjoining rooms. A cool, neutral colour palette is balanced with interesting lighting and open space.

ARAN CUCINE VOLARE ↵

A kitchen design that is synonymous with "sharing", the space is divided between three "dimensions" — an operational side, the "snack" section and the storage area. The table is the element that combines all three. The focus is on convivial living where action and interaction overlap for harmonious living.



FALPER SMALL LIVING KITCHENS ↴

Designed by Andrea Federici, this mini-kitchen maximises compact spaces while maintaining high design standards. Falper applies rational design to create island storage units that are incredibly well laid out and focused on functionality. These islands can be matched with tall units where space allows.





SNAIDERO ELEMENTI †

Snaidero's newest kitchen is described as "the highest expression of minimalist style" and it centres around the essence of form combined with the beauty of function. Exclusive materials create monolithic shapes with a unique "cut" handle creating the new "Groove" framed door.



RIVA1920 LA CUCINA †

Designed by Matteo Thun, this kitchen showcases an elegant wood grain on the base cabinets, tall units and island. The kitchen is deemed a "sacred" space, adaptable to daily needs.

✦ ORNARE ROUND

With its stunning curved details, sinuous lines and rich textured doors, this kitchen was designed by Ricardo Bello Dias and is structured around smooth concave or convex corners to create a soft exterior that provides a sense of welcome and serenity.

ROSSANA HT50 ↗

Designed by Massimo Castagna, this kitchen is celebrated as an iconic minimalist. Utilising a wide range of materials to create a strong contemporary character that is refined and innovative, Rossana is known for its experimentation with technology, light and atmosphere to create kitchens that are both innovative and elegant.



ANTARES AS10 LINE

With a nod to the "industrial" style, this kitchen features a peninsula table that connects the island to the workspace as well as adding a clever "eat-in" option. Thick and thin volumes counter balance the design, with a feature recessed handle adding visual interest.

HACKER INDUSTRIAL ↗

Hacker designs centre around versatile kitchen planning, with a focus on sustainability. The company is proud of its climate-neutral production facilities and only uses water-based lacquers, formaldehyde-reduced timber materials, and products with a high recycled content.



BATHROOMS

This year's bathrooms were centred around an enhanced focus on wellbeing. Europe's bathroom designers have always valued the idea of the bathroom as a space to relax and recharge, but this year, again potentially as a reaction to the pandemic, the idea was taken into overdrive. Product design took inspiration from nature, with a range of organic shapes and textures entering the bathroom. The overriding feeling was of "soft" spaces, with nothing bright or disquieting to detract from the sense of security – it's almost as if we're being given permission to be selfish and invest in our wellbeing. The home is viewed very much as a place of security and the bathroom is envisioned as a space in which to restore health and feel safe.

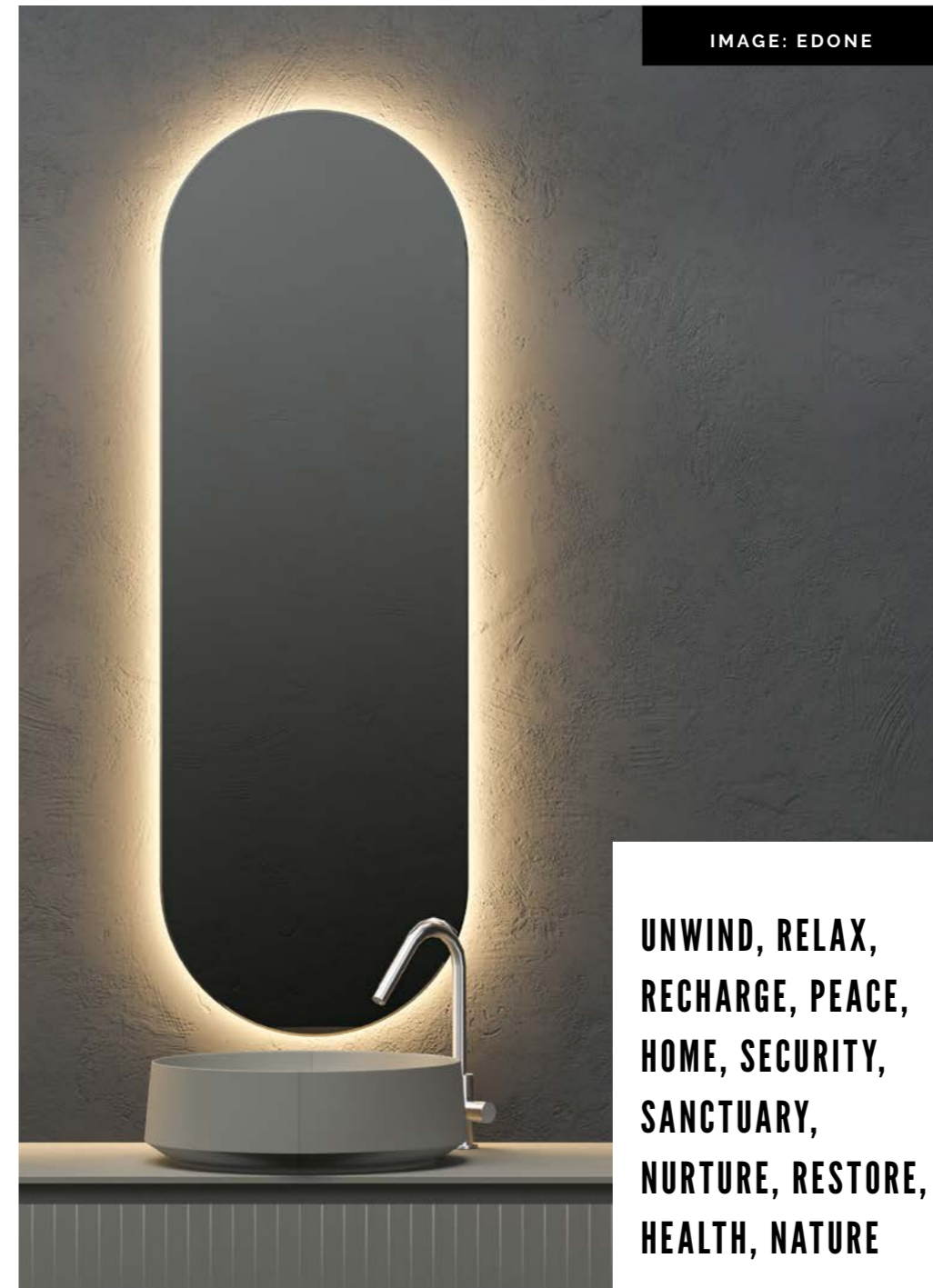


IMAGE: EDONE

**UNWIND, RELAX,
RECHARGE, PEACE,
HOME, SECURITY,
SANCTUARY,
NURTURE, RESTORE,
HEALTH, NATURE**

AQUABELLA ON-TOP XL ↗

Made from Akron®, these two-tone basins feature a crackle textured exterior with a smooth interior for a perfectly defined aesthetic result.



ARBI ARREDOBAGNO CODE RIGA ↘

With a 3D-effect striped pattern and strong graphic imprint, these freestanding basins bring a refined elegance to the bathroom, offering the user a tactile experience that enhances the sensory aesthetic.



AZZURRA J&T ↗

A modular system that offers versatile composition with mix-and match Kros wall unit elements utilising thin vertical metal panels. The collection includes mirrors, lights, accessories, base units, wall units, open compartments, tops and washbasins.



AXA KRACKLITE BASIN WITH PANKA BASE ↘

This gorgeously retro, semi-freestanding ceramic basin is designed by Giancarlo Angelelli, with the Panka base designed by Alessandro Paoletti. The chunky style of the basin is perfectly matched with the four solid feet of the base — mix and match to suit the style of the bathroom.

DEVON & DEVON SECRET GARDEN ↴

Designed by Marcel Wanders Studio, Secret Garden consists of a collection of coverings, furniture and accessories, including wallpapers, small and large ceramic slabs, vanity table, three mirrors, plus a range of ceramic accessories. It's a sensory overload with nature at the forefront, designed to bring beauty to internal spaces.



VITRA LIQUID ↴

Designed by Tom Dixon, this monolithic collection has been described as "expressive minimalism" for its clear design logic, and simplicity in looks and use. It was deliberately designed only in white ceramic to emphasise the fatter, softer lines, and smooth round edges that are easy to clean. The range also includes distinctive wall tiles with designs that reflect ripples in the water with embossed dots and waves.

ANTONIOLUPI WAVE ↴

Designed by Doriana and Massimiliano Fuksas, Wave is a freestanding Carrara marble sink, with a contemporary vibe and solid, sculptural feel that represents a beautiful way to mould natural stone.

The shape and design mimics the flow and energy of a wave of water, while the reduced thickness of the material creates a delicate structure for the bathroom. There is even a clever way to hang a hand towel.





EVER LIFE MOBBY J

Mobby is a practical and compact solution for the bathroom that takes a thin metallic frame, available in matte black and matte white, that can be accessorised with lower shelves available in three stone finishes. The elegant shape is enhanced by the delicate lines of the metal frame matched to the company's collection of washbasins.

ARTELINEA DICROICO ↗

Designed by Davide Vercelli, Dircoico is a play on light and perspectives. Made from four slabs of stratified glass, it celebrates a geometrically rigorous form. The shape of the glass sheets follows the diagram of forces with its triangle-shaped geometry. The film in the lamination of the glass sheets interacts with light according to the observer's point of view, creating shadows and tones from every angle.



↖ ALAPE XCUT

Minimalist and light-weight, these new floorstanding washstands are made from glazed steel to create a statement piece for the bathroom. The versatility of the material creates a gorgeous balance of shapes and allows for an integrated shelf. The cross shape provides a visual counterpoint to the circular basin, above which is set in the frame with a fine 1mm join.





FLAMINIA SPIRE+ J

Designed by Elena Salmistraro, Spire + has a distinctive shape that is natural and organic. Inspired by the shape of shells moulded by the action of the ocean, Spire + has soft, undulating curves with an off-balance design that reflects the fact that nature is not always exacting.

GLASS DESIGN XTREME XL

A monolithic floor-standing basin created from transparent mouth-blown glass, Xtreme XL has a base in either Bianco Calacatta or Nero Marquina marble. It is fitted with a chrome free-flow waste and floor waste connection. The glass is treated with nanotechnology so the water does not cling to the sides and the basins always have a clean and clear appearance with the water being the central visual feature.



SCARABEO DECORART

Inspired by marble, these designs are printed on ceramic and applied to four Scarabeo collections. The decal technique used by the company further expands its experiments with digital printing. Decorart is available in black marble, white marble or travertine and, when paired with the Diva bathroom furniture collection, makes for an item of high aesthetic value in any bathroom.



NOVELLO SARTUS →

Designed by Stefano Cavazzana, Sartus is based around a timber frame that creates shapes for storage. The solution is created from modular elements including washbasin or integrated sink, doors, accessories, towel holders, mirrors, wall bookcases, consoles and columns.



← MOMA DESIGN CHAISE

LONGUE RIVE GAUCHE

A stunning freestanding bathtub made from 19mm tempered transparent glass and solid surface. A feature piece for the bathroom that exemplifies lightness and luxury and a connection to water.



← SANYCCES TEMPO

Designed by Jorge Herrera, Tempo features a special rope element that emphasises the shape of the bath. It combines with the Mistral and Gregal bath trays in iroko wood, either satellite shape or placed across the foot of the bath.



EDONE CALIPSO ↓

A stunning example of smooth geometry, the profile encircles the three sides of the vanity unit to create sharp and elegant lines. With a textured finish, the collection has a slightly retro chic aesthetic that celebrates the elliptical shapes with perfect median symmetry for balance.

EX.T SWING ↗

The Ex.T Swing collection translates shapes from the past into a contemporary language. Wood and LivingTec combine for a dynamic and expressive feel that resonates the rhythmic “swing” of contemporary living. It is a clever, modern interpretation of early metal bathtubs, with matching vanities that are inspired by old-style wash tubs.

DURAVIT ZENCHA ↗ ↘

Designed by Sebastian Herkner, Zencha was inspired by Japanese rituals and craftsmanship. Its stunning organic shape is enhanced by the graceful outward curving edge. The bath is designed as a cambered rectangle — bulbous at the bottom and tapering upwards with an elegant curve. Manufactured from DuraCeram®.

KOHLER STILLNESS ↘

Inspired by peaceful Japanese forest bathing, the Kohler Stillness bath upgrades the bathing experience. Water overflows to the hinoki timber base, while full spectrum lighting surrounds the bath, and fog immerses the user in blissful relaxation. Truly an indulgent bathing experience.





↳ **MAKRO ELEMENTS**

The central tub is the heart of the bathroom's spatial organisation. It becomes a sculptural mass, with a beautiful metal partition that acts as a counterpoint to the graphic geometries. A suspended vanity at the rear adds balance.



AQUABELLA OPAL QUIZ ↓

A stunning two-tone bath with a white interior and coloured exterior in a concrete look with a natural grain. The exterior is given added visual elegance with the Quiz texture created from geometric patterns. At either end the shelf element provides set down for toiletries.

ANTONIOLUPI OFURO ↳

Designed by Carlo Colombo, this bath takes inspiration from the tradition of the Japanese ritual of bathing. The bath becomes a large sculpture for full immersion, with variable thickness on the edge for visual balance.





ARBLU TUBY ↴

Tubular elements combine to create a structure that creates the furniture but also allows for the addition of functional elements such as towel rails, mirror frame, shelves and spotlight.

CERASA BRIDGE ↴

A new furnishing system, Bridge merges the concepts of wainscoting and bookcase to create a central module that can accommodate mirrors, decorative objects, storage elements such as cupboards and drawer units. The central module connects to side modules and is available in two heights.

STORAGE & ORGANISATION

ANTONIOLUPI LETTERAMUTA ↴

Designed by Gumdesign, Letteramuta takes inspiration from the concrete and steel found on a construction site to create a shelving system for the bathroom. The geometry of the beam is cleverly reimagined but still easily recognisable thanks to the "H" section of the extrusion. Can be equipped with an integrated LED light.



LIGHTING



↳ JUSTIN BAILEY POLYP

A series of lamps inspired by natural forms to create voluminous shapes, made from Yupo Paper and recycled PET-G plastic to create a range for the table or pendant lighting.

↳ FONTANA ARTE FRENESI

Designed by studiolumcaguagnino, Frenesi was inspired by the idea of a wave and is constructed from thick glass sheets in an angular metal structure.

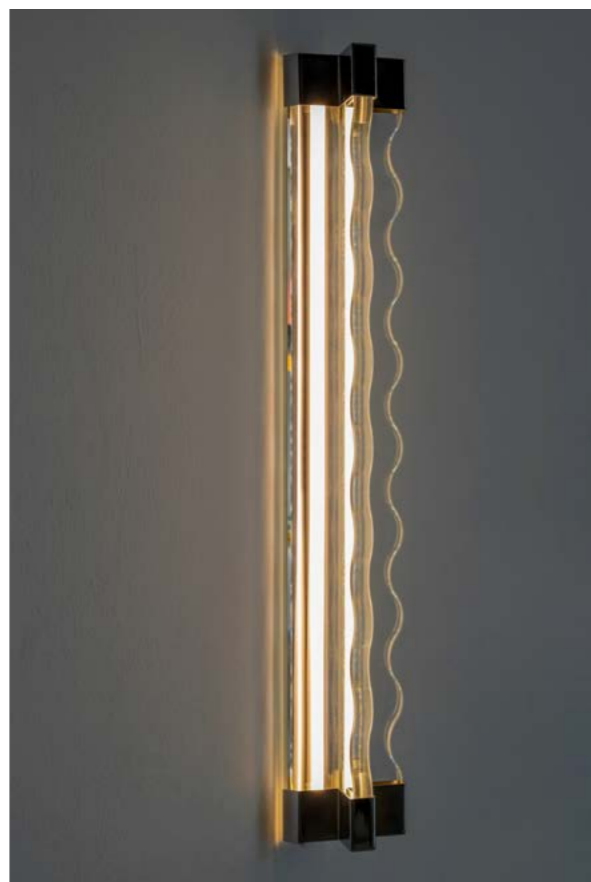


MIREI MONTICELLI RIVA J

From the collection "Ocean Myths", Riva is a gracefully flowing lamp that exploits the intrinsic properties of the Banaca fabric in order to resemble a wave crashing to the shore. The delicate gradient colouring represents water, air and sand.

↳ FONTANA ARTE OORT

Designed by Jacopo Roda, this is a modular lamp system that is formed from a flexible light line within an internally ribbed glass cylinder. The structures can be combined in an infinite number of ways to create a truly unique lighting system.



ARTEMIDE STELLAR NEBULA ↴

Designed by Big as an interpretation and enhancement of artisan glass blowing. The hand-blowing method accentuates the diversity of each unique piece.



LIGHTING

↵ ARTEMIDE EL PORIS

Designed by Herzog & de Meuron, El Poris is a modern, graphic chandelier created from calendared steel tubes of decreasing diameter, joined by four vertical mounts to highlight the graphic simplicity and balance of the piece.



ARTEMIDE OSIDIO ↴

Designed by Michele De Lucchi, Osidio has thin, organic branches that create a chandelier with six luminous heads. Each light terminal can be swivelled to generate the perfect amount of light.



↵ ARTEMIDE LA LINEA

Designed by Big, this is a flexible light tube, designed for both indoor and outdoor application. La Linea is where light becomes a tool to create shape and add design elements to a space. Diameter of 4cm and comes in lengths of 2.5m or 5m.

APPLIANCES

Always interesting, this year's FTK (Future Technology for the Kitchen) featured lots of focus on downdraft rangehoods integrated with induction cooktops, with particular attention paid to the technology behind the extraction system and the space needed below the cooktop. In addition, there were some new products and concepts that sought to solve the challenges of a compact kitchen space, new functionalities, and new technology to make appliances more efficient, with some clever ideas for the future.



BORA PURE ↓

With an air inlet nozzle available in six different colours, Bora Pure offers an extractor power level that automatically adjusts with a patented airflow B4 generator that means it's quiet even at high power levels. Fully flush-mounted, the induction cooktop features four cooking zones with room for up to four pots measuring up to 24cm each.



ELECTROLUX FLEXIBRIDGE WITH EXTRACTOR ↓

With the flexibility to combine cooking areas, the Electrolux Flexibridge was designed to bring freedom to the kitchen. The extractor makes the cooking space more sociable, with no barrier between the cook and guests.



FALMEC QUANTUM PRO ↓

This is the updated Pro version that cleverly combines elegance and performance, with improved controls including a new touch slider. A high-performance induction cooktop, the Falmec Quantum Pro has a powerful and efficient, yet quiet, motor together with Falmec's Carbon.Zeo technology.



↪ ELICA LHOV

Designed by Fabrizio Crisà, LHOV is a hob, hood and oven in one single appliance to maximise space. Wider than a standard oven, the unit offers powerful extraction, with five cooking zones on the hob that is flush-mounted with the benchtop.



SIEMENS FRENCH DOOR FRIDGE J

This new 90cm French Door, four-door refrigerator has a deep black glass finish with special drawer for bottle storage. The Home Connect App can customise the temperature as needed. The wine drawer will take up to 17 bottles on two levels, with an integrated lighting for display.



↪ SMEG 60CM WINE COOLER

Available in 60mm to perfectly coordinate with the other Smeg appliances, the new wine cooler offers capacity for 29 bottles and two independent temperature zones. The interior is Slavonian oak, with a cooling system to minimise vibrations, and telescopic guides on the slide-out shelves to avoid friction from sudden movements.

NEFF GLASS DRAFT HOOD ↪

Guided air technology via a V-shaped air curtain extraction system adjusts the speed of the extraction instinctively, with noise-optimised design, and automatic Air Sensor. An elegant glass screen illumination function offers 16.7 million colour options.





↪ **GAGGENAU FULL SURFACE INDUCTION**

Available in two widths (90cm and 80cm) the unit is installed flush and frameless for seamless integration, or with a stainless-steel frame to complement the benchtop. Up to six pans can be placed anywhere on the cooktop. There are 17 heat levels plus a booster.

BARAZZA ACCESSORISED CHANNELS ↪

Designed as an accessory for the kitchen, the channel optimises space where it's needed most. The unit can be configured with a range of elements including scales, timers, lighting, bluetooth speaker, induction charger, power points, storage, colander, draining rack, knife holder, tablet/smart phone stand and so much more.



↪ **SIGNATURE KITCHEN SUITE UNDER-COUNTER FRIDGE**

With two convertible drawers that can be independently set for six temperature modes — pantry, fridge, bar, fish, meat or freezer, the unit features stainless-steel compartments, an inverter linear compressor, and a total capacity of 96lt.

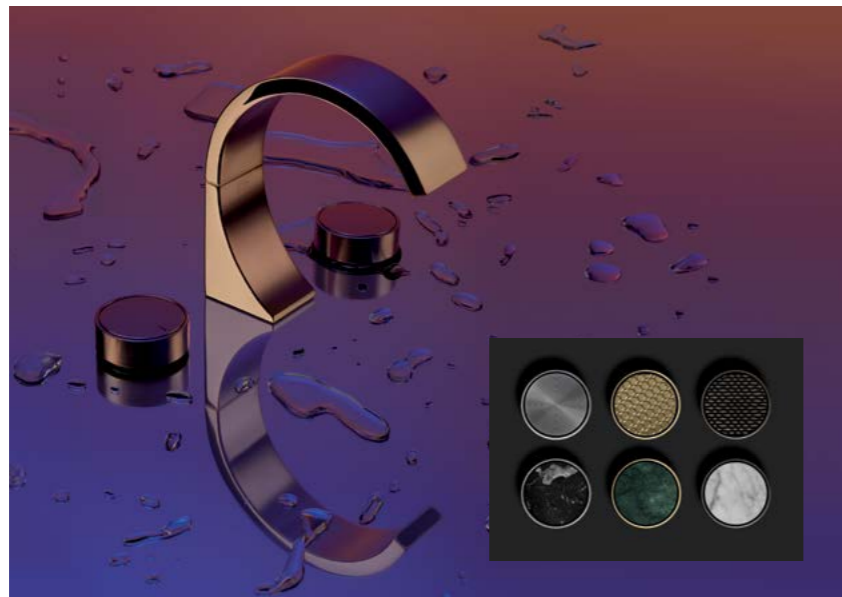
FABITA TUTTO ↪

Designed by Adriano Design, Tutto is an innovative, compact kitchen unit with a timber top, tiny dishwasher, sink, cool drawer and an induction cooktop that hangs on the wall when not in use to maximise benchtop space.



TAPWARE

This year's tapware similarly featured matte textures and muted tones with a focus on differentiation and personalisation, with many manufacturers offering options within handles and colours to allow for the tap to represent the individual user or specific design aesthetic. Shapes were a big feature of the displays, with many new designs taking inspiration from the shape of a wave of water as a representation of how the water flows from the spout of the tap. Detailing was exact, with plenty of thought given to the balance of the form and the function of the tap.



DORNBRACHT CYO †

Designed by Sieger Design with Creative Direction by Mike Mieré, this is a new interpretation of the archetypal C-shaped spout. With a perfect combination of form and function, the tap has a pure, sculptural quality, allowing the jet of water to follow the shape of the spout. An innovative handle concept allows for personalisation.



ZUCCHETTI KOS ISY22 †

Designed by Matteo Thun and Antonio Rodriguez, the goal with this design was to subtract the unnecessary and highlight the essence of water. An interpretation of an earlier model, ISY22 has a larger diameter but still features the same iconic design and sophisticated lines as the original.



QUADRODESIGN FFQT †

Designed by Formafantasma, this new tap is subtle and pared back, with a timeless, symbolic form. The tap can be accessorised with a shelf or mirror which is positioned on the tube element.



ZAZZERI Q316 J

Designed by Arch. Roberto Innocenti, this collection features clear-cut and exact geometries for a strong material effect as well as tactile interaction. A variety of handles — all with ergonomic grip — are available in four textures: Dorica, Linea, Scacchi and Punti.

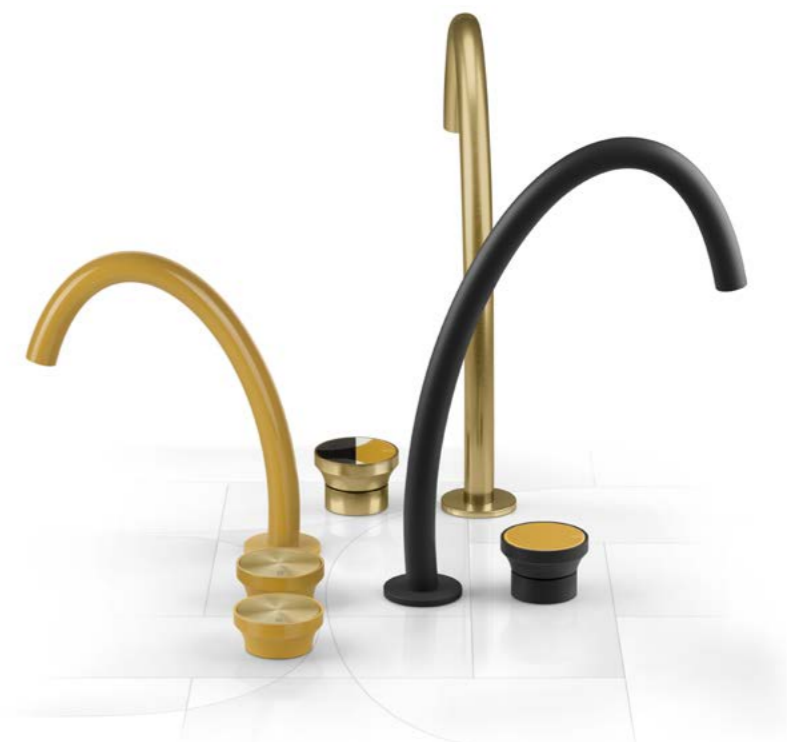


~ NOBILI VELIS

With its very thin control lever, the shape of the tap emphasises the clean, streamlined design. Available with a special anti-scratch PVD treatment in nickel, diamond smoke and red canyon, the tap uses 5l/min with a standard aerator. The collection is available in basin, floor, wall, bidet, shower and bath mixer.

GESI ORIGINI ~

Born from the search for shapes in their purest form, Origini is a collection of taps that celebrate soft and fluid shapes. Iconic and solid, the design reflects a harmonious union of shape and colour, with interchangeable inserts to allow for personalisation. The collection represents the colours of nature — powder pink, griège, ochre, coral brick or agave.



HANSGROHE FINORIS J

A faucet for the bathroom that can handle it all, the idea behind this range of tapware was to redesign familiar processes. Using the #reimagineyourroutine, Hansgrohe integrates clever functions within a geometric sleek design. The range is available in chrome, matte black or matte white, with several spray options.

| | | | | | | | | |
|------------------|------------|---|----------------------|----|---|-------------------------|----|---|
| Alape | 15 | alape.com/en/ | Elica | 24 | elica.com/AU-en | Nolte Küchen | 8 | nolte-kuechen.com/en-gb/ |
| Antares | 11 | antarescucine.it/en/ | Ernestomeda | 7 | ernestomeda.com/ww/en/ | Novello | 17 | novello.it/en/home/ |
| Antoniolupi | 14, 19, 20 | antoniolupi.it/en/ | EVER Life Design | 15 | everlifedesign.it/en/ | Ornare | 10 | ornare.com.br/en/about-us/ |
| Acquabella | 13, 19 | acquabella.com/en/ | Ex.T | 18 | ex-t.com/ | Quadrodesign | 26 | quadrodesign.it/en |
| Aran Cucine | 9 | arancucine.it/en/ | Fabita | 25 | fabita.it/en | Riva1920 | 10 | riva1920.it/en/ |
| Arbi Arredobagno | 13 | arbiarredobagno.com/ | Falmec | 23 | falmecau.com/ | Rossana | 11 | rossana.com/en/ |
| Arblu | 20 | arblu.it/en/ | Falper | 9 | falper.it/en/ | Sanycces | 17 | sanycces.es/en/home/ |
| Arrital | 6 | arrital.com/ | Flaminia | 16 | ceramicaflaminia.it/en/ | Scandola Mobili | 8 | scandolamobili.it/ |
| Artelinea | 15 | artelinea.it/en-gb/home | Fontana Arte | 21 | fontanaarte.com/en/ | Scarabeo | 16 | scarabeoceramica.com/ |
| Artemide | 22 | artemide.com/en/home | Gaggenau | 25 | gaggenau.com.au/ | Scavolini | 6 | scavolini.com/ww/ |
| AXA/Colavene | 13 | colavene.it/ | Gessi | 27 | gessi.com/ | Siemens | 24 | siemens-home.bsh-group.com.au/ |
| Azzurra | 13 | azzurrabagni.com/home | Glass Design | 16 | glassdesign.it/ | Signature Kitchen Suite | 25 | signaturekitchensuite.it/it_en/ |
| Barazza | 25 | barazzasrl.it/en/ | Hacker | 11 | haecker-kuechen.com/en/ | Smeg | 24 | smeg.com.au/ |
| Bora | 23 | bora.com/au/au/ | Hansgrohe | 27 | hansgrohe.com.au/ | Snaidero | 10 | snaidero.com/en/ |
| Cerasa | 20 | cerasa.it/en/ | Justin Bailey Design | 21 | jbaileydesign.com/ | TM Italia | 7 | tmitalia.it/en/ |
| Cesar | 6 | cesar.it/en/ | Kohler | 18 | kohler.com.au/ | Veneta Cucine | 9 | venetacucine.com/en |
| Devon & Devon | 14 | devon-devon.com/int/ | Makro | 19 | makro.it/en/ | Vitra | 14 | vitraglobal.com/ |
| Doimo Cucine | 7 | doimocucine.com/ | Mirei Monticelli | 21 | studiomirei.com/ | Zazzeri | 27 | zazzeri.it/ |
| Dornbracht | 26 | dornbracht.com/ | MOMA Design | 17 | moma-design.it/en/ | Zucchetti | 26 | zucchettikos.it/en/ |
| Duravit | 18 | duravit.com/ | NEFF | 24 | neff.com.au/ | | | |
| Edone | 17 | edonedesign.it/it | Nobili Rubinetterie | 27 | nobili.it/ | | | |
| Electrolux | 23 | electrolux.com.au/ | Nobilia | 8 | nobilia.de/en/ | | | |